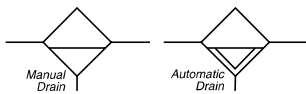


QUBE Features
Filters
Coalescing Filters
Regulators
Lubricators
Integral Filter Regulators
Combination Units
Accessories
Soft Start Valves
Mounting Brackets

F35 Filter



Features

- Compact Size Allows Greater Design Flexibility
- Nearly Double the Flow Capacity of Standard Miniature Filters; Reduces Costly Pressure Drop
- Connects to Other QUBE Units Using Just Screws and O-rings (Included)
- Integral Mounting Slots Eliminate Need for Mounting Brackets
- Excellent Water Removal Efficiency
- Unique Deflector Plate that Creates Swirling of the Air Stream Ensuring Maximum Water and Dirt Separation
- Large Filter Element Surface Guarantees Low Pressure Drop and Increased Element Life
- 20 Micron Filter Element Standard, 5 Micron Available
- Transparent Polyurethane Bowl Standard
- Metal Bowl with Wraparound Sight Gauge Optional
- Manual Drain as Standard, Optional Piston Drain
- Large Bowl Capacity
- High Flow: 1/8" - 32 SCFM[§]
1/4" - 38 SCFM[§]

Polyurethane Bowls and Sight Gauges Offer Improved Chemical Compatibility.

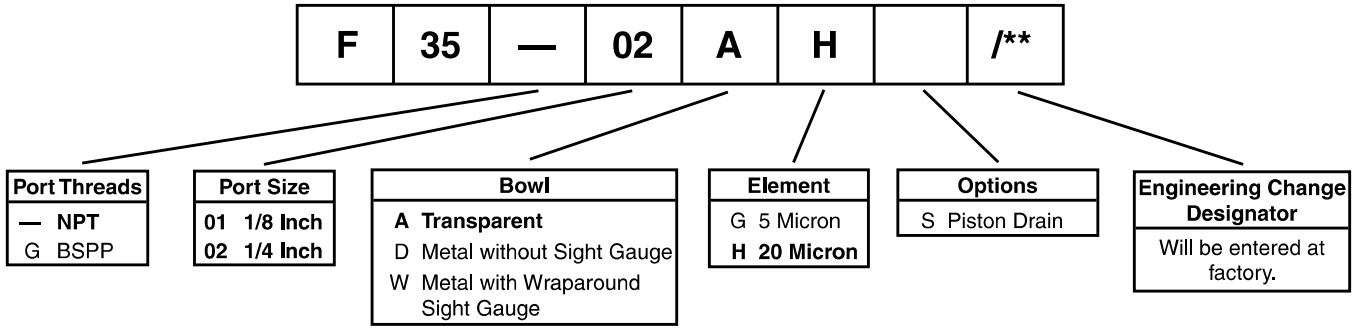


Port Size	NPT	
	Manual Twist Drain	Piston Drain
Polyurethane Bowl		
1/8"	F35-01AH	F35-01AHS
1/4"	F35-02AH	F35-02AHS
Zinc Bowl / Sight Gauge		
1/8"	F35-01WH	F35-01WHS
1/4"	F35-02WH	F35-02WHS

Wraparound Sight Gauge Bowl
 All QUBE filters, lubricators, and integrals are available with the Watts Wraparound Polyurethane Sight Gauge Bowl. These unique bowls provide the 360° visibility of a plastic bowl while maintaining the high strength and safety features of metal bowls. Polyurethane bowls with guards, and metal bowls, are also available.

Bold Items are Most Popular.
 For other models refer to ordering information below.
[§] SCFM = Standard Cubic Feet Per Minute at 100 PSIG Inlet, and 5 PSIG Pressure Drop with 20 Micron Element.

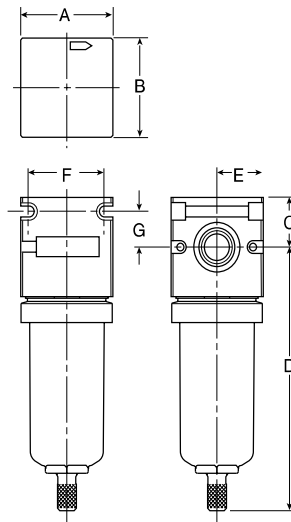
Ordering Information



BOLD ITEMS ARE MOST POPULAR.

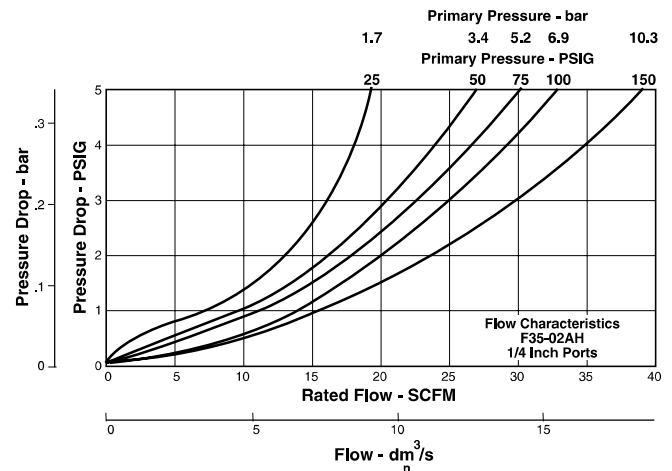
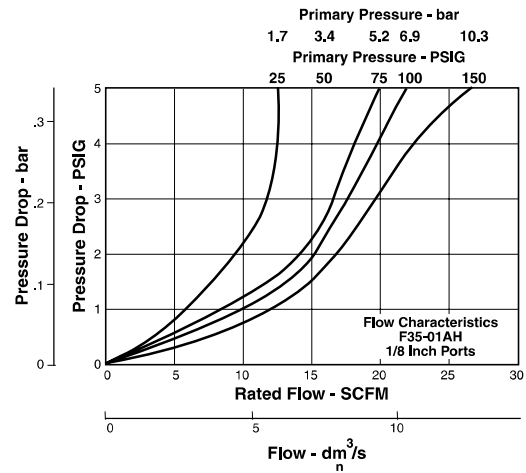


Technical Information



F35 Filter Dimensions						
A	B	C	D	E	F	G
F35-AH, F35-DH						
1.59 (40.5)	1.59 (40.5)	0.81 (20.6)	4.25 (107.9)	0.80 (20.2)	1.31 (33.3)	0.58 (14.7)
F35-WH						
1.59 (40.5)	1.59 (40.5)	0.81 (20.6)	4.27 (108.3)	0.80 (20.2)	1.31 (33.3)	0.58 (14.7)

Inches
(mm)



F35 Filter Kits & Accessories

Bowl Kits –

- Polyurethane (A)..... BKF35A
- Zinc (D)..... BKF35D
- Zinc (W) Wraparound Sight Gauge BKF35W

Drain Kits –

- Manual Twist Drain SA600Y7-1
- Piston (Max. Pressure: 175 PSIG)..... PKF35
- Semi-Automatic “Overnight” Drain SA602A7
(Drains automatically under zero pressure)

Filter Element Kits –

- 5 Micron (All) EK504VY
- 20 Micron (All) EK504Y

Face Mounting Bracket Kit (See Page 35) SAR35Y57

Repair Kit –

- Deflector, Retainer (All) RFK30

Specifications

Bowl Capacity 1.5 Ounce

Port Threads 1/8, 1/4 Inch

Pressure & Temperature Ratings –

- Polyurethane Bowl..... 0 to 150 PSIG (0 to 10.2 bar)
40°F to 125°F (4.4°C to 52°C)

- Zinc Bowl..... 0 to 300 PSIG (0 to 20.4 bar)
40°F to 180°F (4.4°C to 82.2°C)
- With Piston Drain..... 175 PSIG Max. Press. (11.9 bar)
40°F to 150°F (4.4°C to 65.6°C)
- Zinc Bowl w/ Sight Gauge 0 to 250 PSIG (0 to 17.2 bar)
- With Piston Drain..... 175 PSIG Max. Press. (11.9 bar)
40°F to 150°F (4.4°C to 65.6°C)

Weight –

- Polyurethane Bowl..... 0.7 lb. (0.3 kg) / Unit
18.9 lb. (8.6 kg) / 24-unit Master Pack
- Zinc Bowl..... 0.9 lb. (0.4 kg) / Unit
23.9 lb. (10.8 kg) / 24-unit Master Pack
- Zinc Bowl W/ Sight Gauge..... 0.96 lb. (0.4 kg) / Unit
25.1 lb. (11.4 kg) / 24-unit Master Pack

Materials of Construction

- BodyZinc**
- Bowls Polyurethane
Metal (Zinc)**
- Drains Brass**
- Filter Elements Polypropylene**
- Seals Nitrile**



- QUBE Features
- Filters
- Coalescing Filters
- Regulators
- Lubricators
- Integral Filter Regulators
- Combination Units
- Accessories
- Soft Start Valves
- Mounting Brackets